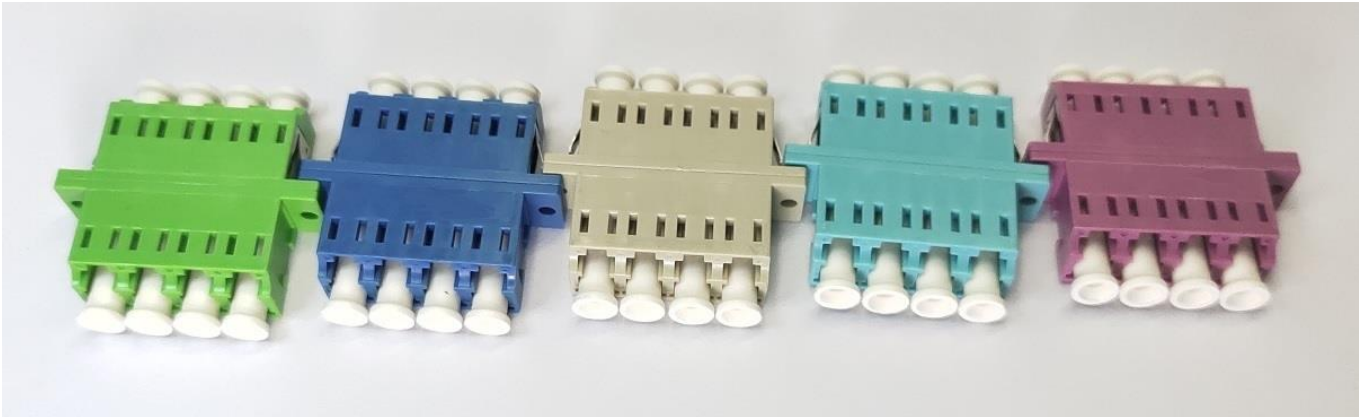




LC Optical Adapter Serials

QADLCx4-108 UPC/APC/MM

—— LC-LC 4 Ports Joint-Housing Optical Adapter ——



Preparation	Review	Approval
Liu Jian	Liu Hongyu	Huang Xiaoyu

Revision History

Revise Date	Author	Document Rev.	Modification Record
2019-12-09	Liu Jian	V1.0	New Draft
2021-06-01	Liu Hongyu	V2.0	Detailed Information
2023-8-17	Liu Hongyu	V2.1	Update LOGO

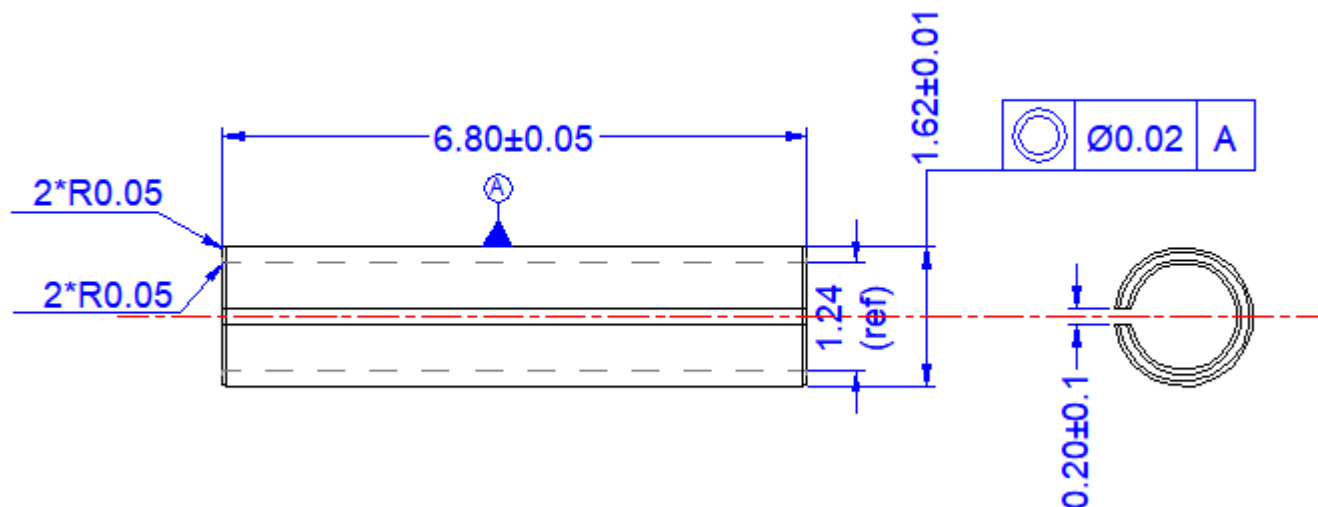
[www.qyftth.com](http://www.qyftth.com)



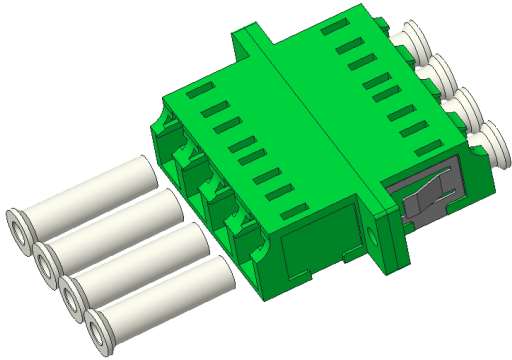
## Specification

Items	Sub-items	Number	Explanation	Notes	Others
Application Condition		Indoor: Building residential area optical network, FTTx network,test instruments and kinds of optical communication network; Outdoor: Telecommunication base station, Cable TV network;			
Appearance		Appearance of adapter must be smooth and clean. It has no oil, burrs, scars and crack The color of adapter must be bright in good consistency All parts of adapter are assembled well without difficulty, it should be easy and comfortable to screw in and screw out connector from adapters and connect tightly.			
Material Characteristic	Dust cap type	4+4pcs	Stick type	Dust cap not Flame retardant Dust cap may changed by patch if not indicated	
	Dust cap material		PE/ABS		
	Dust Cap color		White		
	Material: housing, inner core	1+1pcs	PC (PEI)		
	Color: housing		UPC:Blue,APC:Green	MM:milk white, OM3:aqua blue, OM4: purple	
	Sleeve Material	4pcs	LC, Zirconia Ceramics	-	
	Others		Other parameters meet standard IEC61754-4, YD/T 1272.3		
Physical & Function Requirements	Adapter Type	Quadruplex Port	LC-LC		
	Port Number		4		
	Panel Mounting Dimension	Panel hole check product drawing			
Mechanical Characteristic	Unmating Force	2~6N			
	Tensile strength of coupling mechanism	40N/10 Minute	IEC61300-2-6	68.6N keeping 15S	
		70N/10 Minute	GR326		
	Ceramic Bushing Retention Force	80N Min. per port			
	Ceramic strength	6.8kg F 5S	Axis direction, without fracture, and IL Passed		
		3.4kg F 5S	90° direction, without fracture and IL passed		
	Durability EIA-364-09C	ΔIL≤0.2dB	500 times		
Repetition performance	Repeat plug in-out test	IEC61300-2-2, Number of the cycles: 500, ΔIL≤0.2dB, ΔRL ≤5dB, No mechanical damage			
Optical Characteristic	Insertion Loss	IL max≤0.2dB	All test IL≤0.2dB		
	Directionality of ceramic sleeve	Turn sleeve 0-90-180-270°		All 4 direction IL≤0.2dB	
Environmental	Working temperature	-25℃~+75℃		-40℃~+85℃ (FC/MPO)	
Environment Protection	Materials are environment protection	RoHS	Or/and: REACH, HW		
Fire rating	Fire protection level	UL94-V0		Not include dust caps	
Packaging, Storage, Label	Packaging type	Blister box	Customer may order packaging type		
	Shelf Life	24 months	In room temperature, all specification no change		
	Other requirement for Packing Material	Recycle	Recycle, Anti-static, etc.		
	Label	Product name, specification, quantity, batch, manufacture logo or mark		Or customer ordered	

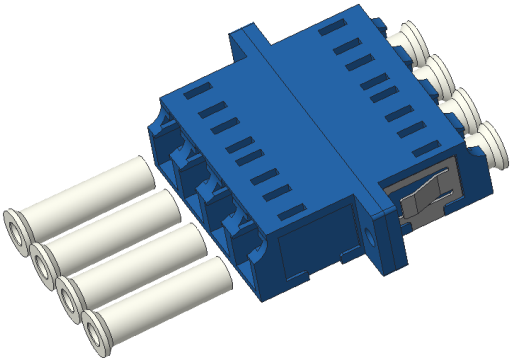
## Zirconia ceramics Sleeve:



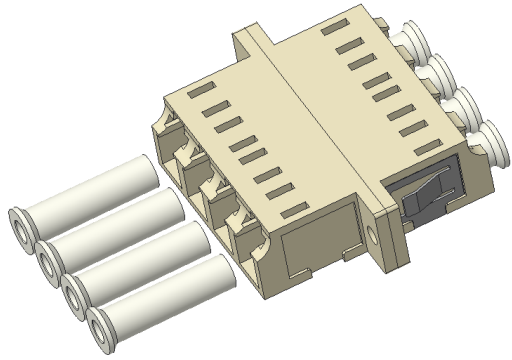
## Product appearance:



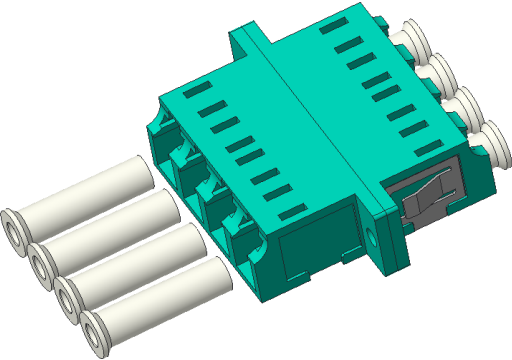
APC: Green



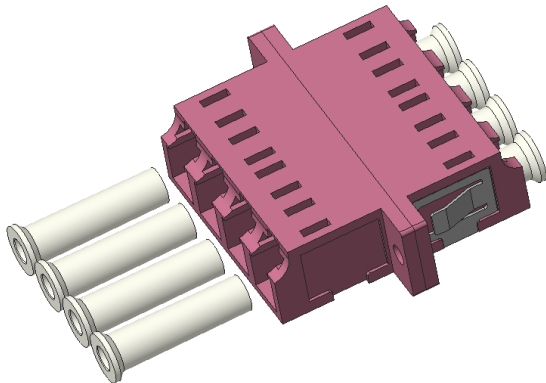
UPC: Blue



MM: Milk white



OM3: Aqua blue



OM4: Purple

**Package:** The Adapter shall be packed according to the followings:

1) 20pcs in a Blister box (5x2)



Blister box Size (cm)	21.5x16x1.3
Q'ty (pcs//Blister)	5x4=20
N.W. (g/each adapter)	5.95
Gross weight (20pcs/Blister)	130.3
5 blisters with 1 cover	

2) pcs in a big carton



Outer Carton Size(cm)	47x38.5x41cm
Q'ty (blister box/outer carton)	
Q'ty (pcs/ outer carton)	
N.W. (kg/outer carton)	
G.W. (kg/outer carton)	

